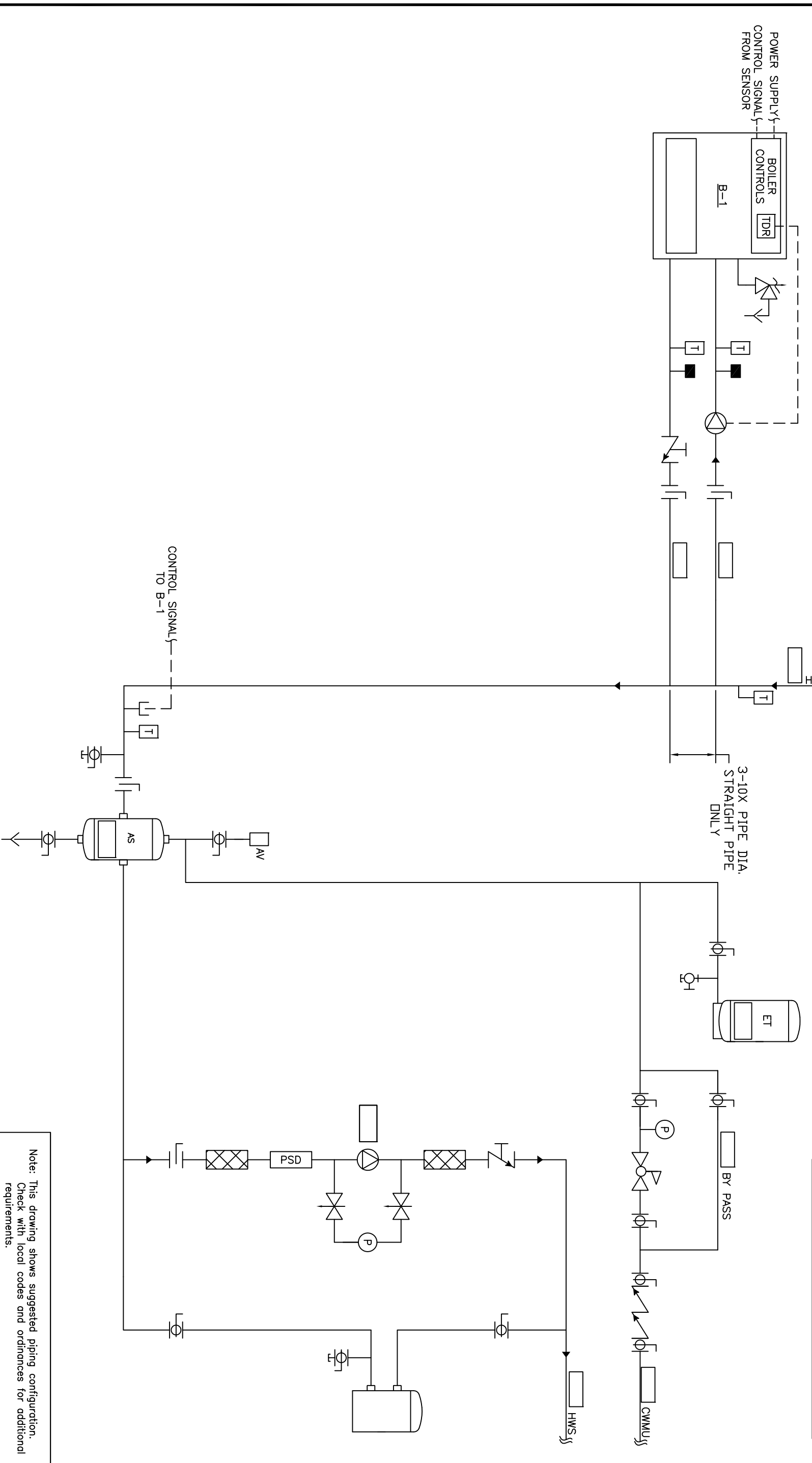


Recc all piping to be sized per ASHRAE F36



Note: This drawing shows suggested piping configuration.
Check with local codes and ordinances for additional requirements.

<p>THIS DRAWING AND THE INFORMATION OF DEPICTED THEREIN IS THE PROPERTY OF CHC, CALIFORNIA HYDRONICS CORP., AND IS TO BE KEPT IN CONFIDENCE AND SHALL NOT BE REPRODUCED OR COPIED, OR USED AS THE BASIS FOR THE MANUFACTURING, INSTALLATION OR SALE OF PRODUCT OR SERVICE WITHOUT THE WRITTEN PERMISSION OF CHC.</p>	
PROJECT NAME:	HYDRONIC PRIMARY/SECONDARY - ATMOSPHERIC BOILERS, NO TEMP PROTECTION, WITH SYSTEM PUMP
PROJECT LOCATION:	
ENGINEER:	
CUSTOMER:	
DRAWING TITLE:	HYDRONIC PRIMARY/SECONDARY - ATMOSPHERIC BOILERS, NO TEMP PROTECTION, WITH SYSTEM PUMP
DRAWING No.	H-PS-100-1XX-1
DESIGNED BY	
CHECKED BY	
APPROVED BY	
DATE	05/23/08
SCALE	AS SHOWN
REV	A
DESCRIPTION	RELEASED
BY	RSG
DATE	05/28/08

